

Company Information

Date Contact Person E-Mail

Company Name Department Web

Address Phone *Please answer all the following questions as accurately as possible. This information will form the basis of our quotation to you.*

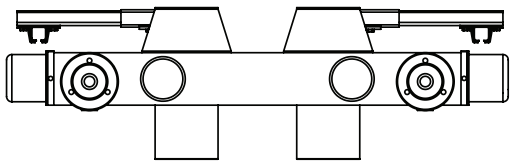
..... Fax

System Information

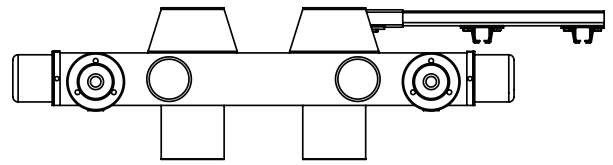
Type Of Application Outdoor Indoor Temperature Range °C min °C max Daily working hours day/hour

Mounting Part Arrangement Types With Support Bar

- Double Girder**
(two side Support bar arrangement)



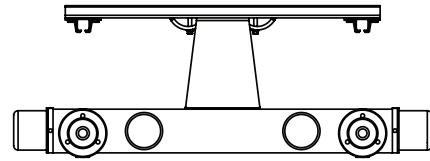
- Double Girder**
(one side Support bar arrangement)



- Monarail**
(one side Support bar arrangement)



- Monarail**
(two side Support bar arrangement)



Power Application

System storage distance m

Track Length m

Max loop depth cm

Travel Speed m/min

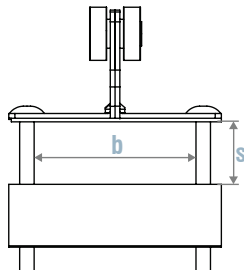
Min Bending Radius mm

- Flatform Cables**

Cab. No	Width	Thickness
.....	mm	mm
.....	mm	mm
.....	mm	mm

s mm

b mm



- Roundform Cables**

Cab. No	Cable Dim. ØD
.....	mm
.....	mm
.....	mm



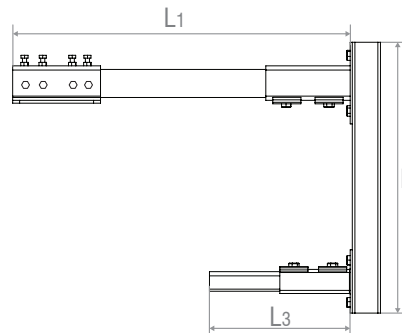
- Tow Arm Arrangement**

L1 mm

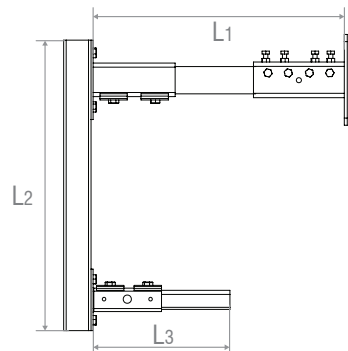
L2 mm

L3 mm

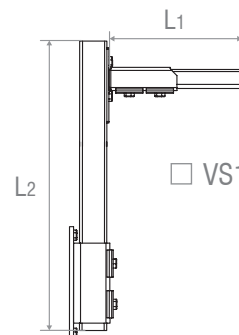
- VS1008A



- VS1008B



- VS1008E



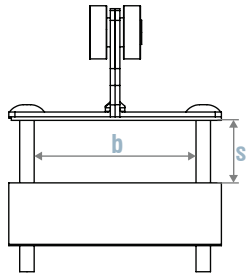
Control Application

Platform Cables

Roundform Cables

<u>Cab.</u>		
<u>No</u>	<u>Width</u>	<u>Thickness</u>
.....	mm mm
.....	mm mm
.....	mm mm

s mm
b mm



<u>Cab.</u>	<u>Cable Dim. ØD</u>
<u>No</u> mm
..... mm
..... mm



Runway Girder Application

Tow Arm Arrangement

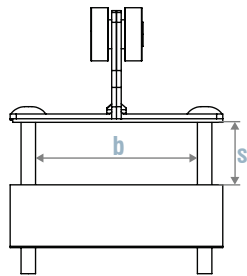
System storage distance m
Track Length m
Max loop depth cm
Travel Speed m/min
Min Bending Radius mm

L1 mm
L2 mm
L3 mm

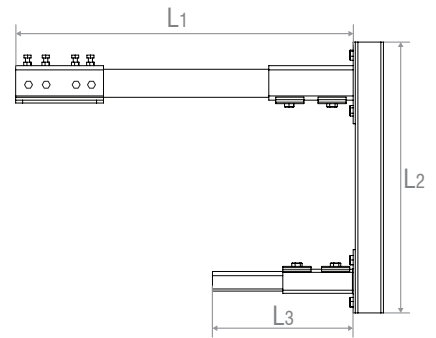
Platform Cables

<u>Cab.</u>		
<u>No</u>	<u>Width</u>	<u>Thickness</u>
.....	mm mm
.....	mm mm
.....	mm mm

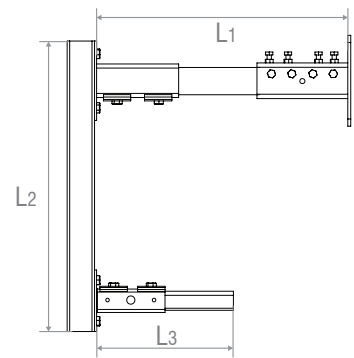
s mm
b mm



VS1008A

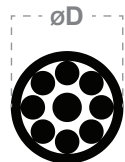


VS1008B



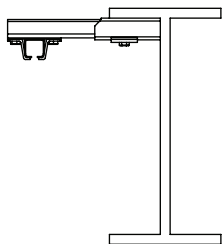
Roundform Cables

<u>Cab.</u>	<u>Cable Dim. ØD</u>
<u>No</u> mm
..... mm
..... mm

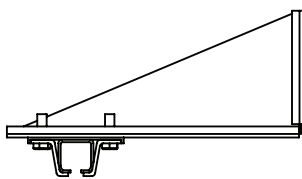


Support Bracket Arrangement

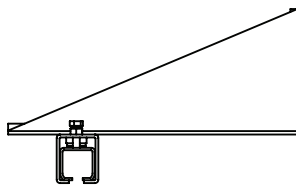
Type 1



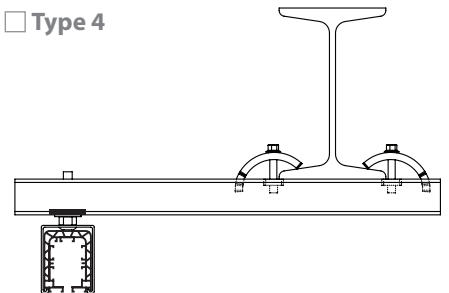
Type 2



Type 3



Type 4



End Carriage Cap

Rubber Buffer

Product Code:...../.....unit (for main trolley arrangement)

Product Code:...../.....unit (for runway girder arrangement)

Special operating conditions :

Any additional data: